



**Specialist Cattle Products**

# **Designed & Made For New Zealand**



**We've spent over 70 years  
helping New Zealand Cattle  
Farmers excel in what they do  
best — producing world class  
beef products for the world.**



*Want to learn more?*



## Made for our Conditions. Made for New Zealand.

There's a reason MSD Animal Health and Allflex have come together. Between us, we offer one of the country's largest beef product portfolios — designed and developed for New Zealand's unique conditions. Our teams are aligned and guided by one mission - **The Science of Healthier Animals™**.

Together, Allflex and MSD offer a comprehensive suite of animal health and management products connected through identification, traceability and monitoring solutions. These solutions are a direct result of our drive to help New Zealand beef farmers produce first class products on the world stage — now and in the future.

World class products do not arise by accident. They rely on an attitude of constant improvement, a skill practised by New Zealand farmers daily.

To support this we're leading the way in research and development to advance disease prevention, animal health, on-farm efficiency, productivity and profitability.

The joint expertise of MSD Animal Health & Allflex, positions us as the ideal partner to help you excel at what you do best. And just like you, we're proud of our kiwi heritage, supporting New Zealand beef farmers for over 70 years. Every product is made first and foremost for your farm and designed for New Zealand's conditions — from Cape Reinga to Bluff.

Take a look at our range of products and find the best solution for your farm. Our team of locals are on hand ready to help if you need any support.



Check out our range inside.



# Allflex Cattle Tags

**Designed in New Zealand, Allflex tags allow farmers to monitor their animals as individuals, helping drive overall performance.**

Our tags are available with LaserPlus marking - easily the most visible numbers on the market. Ensuring numbers are easy to read and don't rub off.

We are also the only provider of EID tags paired with a tissue sampling unit (TSU) in New Zealand.

Get in touch with your regional Allflex Territory Manager or your local retailer about which Allflex tag is best for your needs.

## Visual Tags

Available in a range of colours and sizes.

## FDX / HDX Electronic Identification (EID) Tags

Choose from either our high-performance HDX tags or standard FDX EID tags.

## Tissue Sample Unit (TSU)

A quick, easy, reliable way to sample DNA.

## Pre-paired TSU Packs

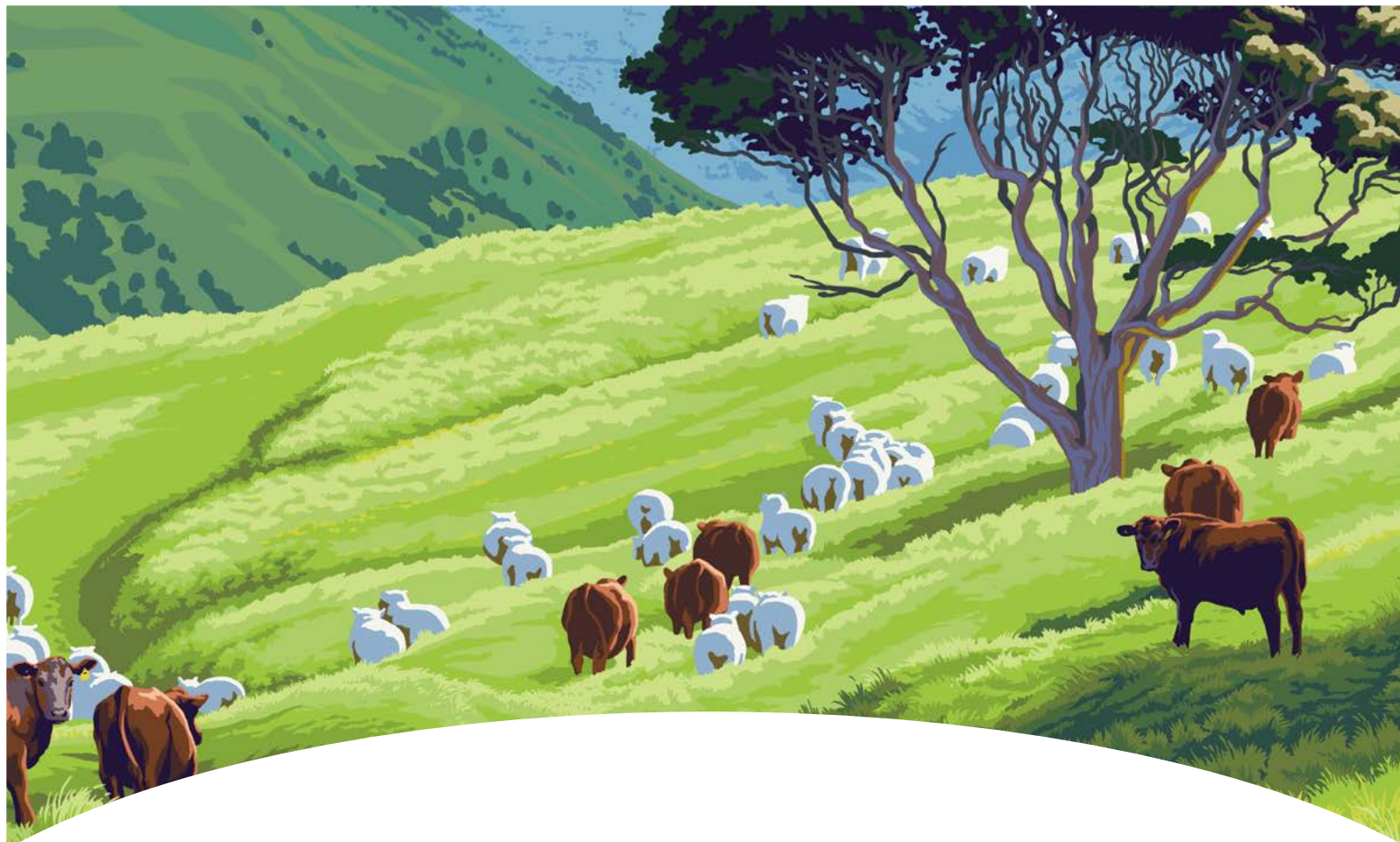
Remove the need for manual entry with pre-paired NAIT Matching Management sets.



## Lifetime Electronic Record

From Gate to Plate





# COOPERS<sup>®</sup> Drenches & Pour-Ons

**Worms, flies and lice can cause stress, malnutrition, lost productivity and animal welfare issues. The use of drenches and pour-ons on farms can help prevent and treat infestations.**

Talk to your vet or rural retailer about how the COOPERS<sup>®</sup> range from MSD Animal Health can benefit your stock.



Proven & trusted range.



Protect your flock from parasites.





**Did you know?**  
Our cattle vaccines are kept chilled during transportation by wool insulation — An environmentally responsible, innovative insulation packaging solution made from sheep's wool.



# Bovilis<sup>®</sup> Cattle Vaccines

**Bovine Viral Diarrhoea (BVD), Salmonellosis, Leptospirosis and Pinkeye are diseases that can be costly, painful and severely affect production.**

Salmonellosis and Leptospirosis can also affect humans. The most effective means of prevention and control of these diseases is vaccination.

Talk to your vet to see how MSD's Bovilis cattle vaccines can benefit you and your mob.

Visit [Bovilis.co.nz](http://Bovilis.co.nz) for more information.



Vaccinations prevent & control.



Prevent widespread disease.



Improve animal welfare.



Salvexin<sup>®</sup>+B, Leptavid<sup>®</sup> 2, Piliguard<sup>®</sup> and Bovilis<sup>®</sup> BVD are AVAILABLE ONLY UNDER VETERINARY AUTHORISATION.



# Clostridial Vaccines

**Clostridial diseases, including Tetanus, Pulpy Kidney, Blackleg, Malignant Oedema, Black Disease, Enterotoxaemia, Lamb Dysentery, Red Water and Sudden Death can strike rapidly and are almost always fatal.**

The only viable means of control is vaccination.

Talk to your vet or rural retailer about how MSD's Clostridial Vaccines can benefit your stock.



Vaccinations prevent & control.



Prevent widespread disease.



Improve animal welfare.



\*COVEXIN® 10 is AVAILABLE ONLY UNDER VETERINARY AUTHORISATION. The Multine® range is available from your vet or rural retailer.

## TOP FARMERS KNOW-HOW

### Top Farmers Know-How

Check out our Top Farmers Know-How website which is a library of industry best practice for some key animal health management areas like BVD and Salmonella.

Visit [www.topfarmers.co.nz](http://www.topfarmers.co.nz) or scan the QR code below



### Head Shepherd Podcast

Allflex is a proud sponsor of the Head Shepherd Podcast from neXtgen Agri.

Covering all things livestock through the amazing stories of farmers and the people that study them.

Scan the QR code below to listen — we highly recommend it!



# Your Local Experts

Our nationwide team of local experts are here to support you and provide advice on our extensive beef product portfolio, making sure you get the most out of our products. Together, we can improve the animal health and performance of New Zealand livestock.

#### MSD Animal Health

33 Whakatiki Street,  
Upper Hutt  
0800 800 543

#### Allflex

17 El Prado Drive,  
Palmerston North  
0800 ALLFLEX (255 3539)



ACVM No's A934, A11311, A10249, A10119, A7130, A7368, A8214, AVAILABLE ONLY UNDER VETERINARY AUTHORITY  
AUTHORISATION ACVM No's: A9028, A7886, A8237, A8192, A1948. Schering-Plough Animal Health Ltd.  
Phone: 0800 800 543. [www.msd-animal-health.co.nz](http://www.msd-animal-health.co.nz) NZ-CVR-Z20200001.  
©2022 Intervet International B.V. All Rights Reserved.

