

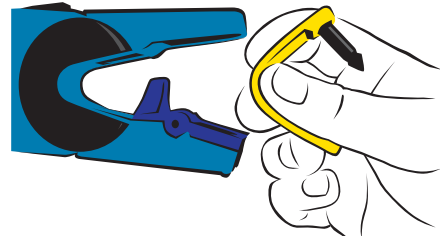
RapIDtagger

Instructions for use

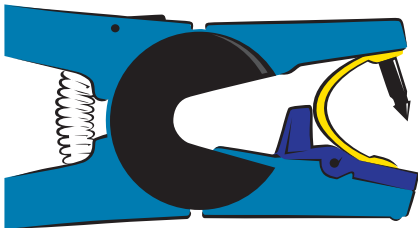
- 1 Twist tag from strip.



- 2 Load tag into applicator as pictured.



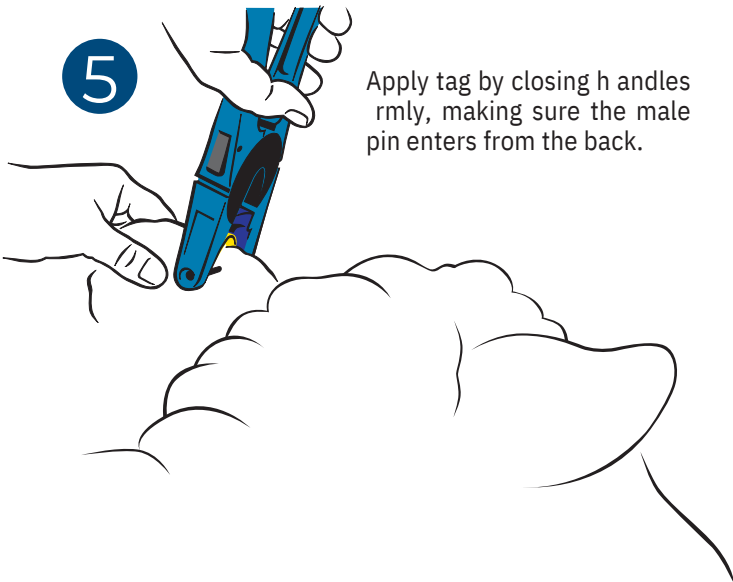
- 3 Ensure female end is located in blue insert.



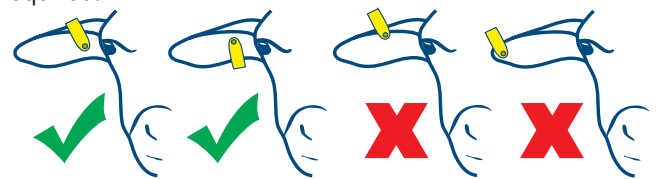
- 4 Check that the male end is located correctly.



- 5 Apply tag by closing handles firmly, making sure the male pin enters from the back.



Tag should be located as close to the head as practically possible, allowing room for growth if required.



CAUTION: Always immerse loaded tags in an antiseptic solution before applying. Use correct dosage as recommended.

